



CLPTM1 Polyclonal Antibody

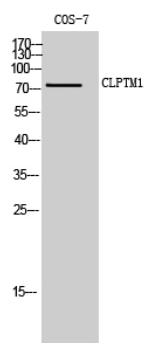
Catalog No	YP-Ab-13184
Isotype	IgG
Reactivity	Human;Mouse;Monkey
Applications	WB;IF;ELISA
Gene Name	CLPTM1
Protein Name	Cleft lip and palate transmembrane protein 1
Immunogen	The antiserum was produced against synthesized peptide derived from human CLPT1. AA range:200-249
Specificity	CLPTM1 Polyclonal Antibody detects endogenous levels of CLPTM1 protein.
Formulation	Liquid in PBS containing 50% glycerol, 0.5% BSA and 0.02% sodium azide.
Source	Polyclonal, Rabbit,IgG
Purification	The antibody was affinity-purified from rabbit antiserum by affinity-chromatography using epitope-specific immunogen.
Dilution	Western Blot: 1/500 - 1/2000. Immunofluorescence: 1/200 - 1/1000. ELISA: 1/10000. Not yet tested in other applications.
Concentration	1 mg/ml
Purity	≥90%
Storage Stability	-20°C/1 year
Synonyms	CLPTM1; Cleft lip and palate transmembrane protein 1
Observed Band	74kD
Cell Pathway	Membrane ; Multi-pass membrane protein .
Tissue Specificity	Widely expressed.
Function	function:May play a role in T-cell development.,miscellaneous:A chromosomal translocation involving CLPTM1 is found in a family with cleft lip and palate. However, no etiologic link with the disease is characterized. Translocation t(2;19)(q11.2;q13.3).,similarity:Belongs to the CLPTM1 family.,tissue specificity:Widely expressed.,
Background	function:May play a role in T-cell development.,miscellaneous:A chromosomal translocation involving CLPTM1 is found in a family with cleft lip and palate. However, no etiologic link with the disease is characterized. Translocation t(2;19)(q11.2;q13.3).,similarity:Belongs to the CLPTM1 family.,tissue specificity:Widely expressed.,
matters needing attention	Avoid repeated freezing and thawing!



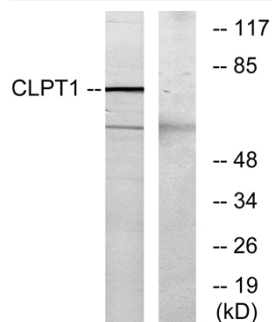
Usage suggestions

This product can be used in immunological reaction related experiments. For more information, please consult technical personnel.

Products Images



Western Blot analysis of COS-7 cells using CLPTM1 Polyclonal Antibody



Western blot analysis of lysates from COS7 cells, using CLPT1 Antibody. The lane on the right is blocked with the synthesized peptide.